

ESD



ESD-solutions

For a safe and efficient production environment



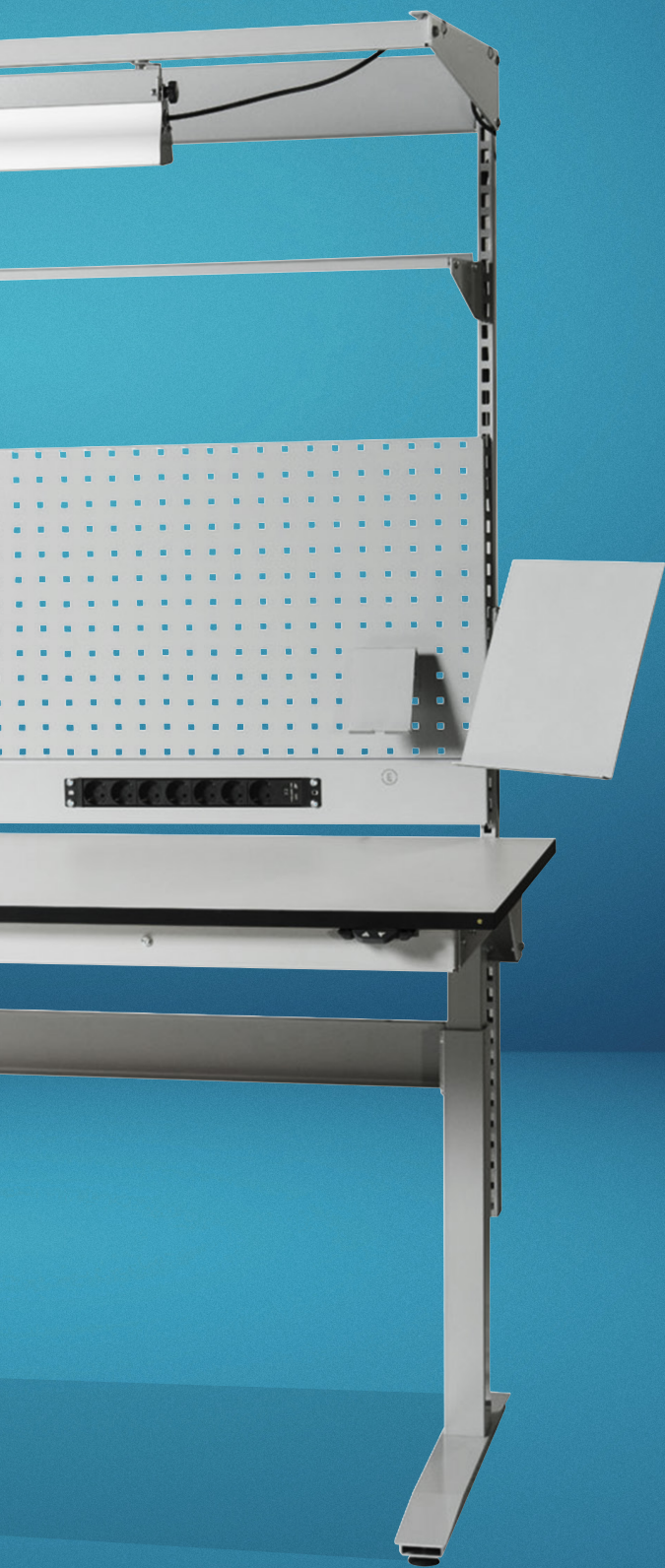
ESD Controlled discharge

Welcome to our brochure ESD products, for the industrial and electronics sectors!

With our range of ESD products, we help you ensure a safe and efficient work environment while protecting your valuable equipment.

Let us guide you through a world of reliable solutions that optimize your safety and production while minimizing costly downtime.





What is ESD? -Electro Static Discharge

ESD stands for Electro Static Discharge, which means electrical discharge or static electricity transferred from one object to another. In everyday terms, we experience ESD as small electric shocks or sparks, for example, when we move on a carpet and then touch metal. In the industry, ESD is a significant problem. The more we know about the causes, the better we can prevent the risks.

1. Protection of sensitive electronics: In many industries, sensitive electronics and microelectronic components are used. A small electric discharge can damage or destroy these components, leading to costly repairs or loss of valuable equipment.
2. Production quality: ESD can affect production processes by interfering with electronic controls and measuring instruments. If discharges are not correctly controlled, it can result in production interruptions and defective products.
3. Personal safety: Besides causing damage to equipment, ESD can pose a danger to employees in environments where flammable materials are present.
4. Regulations and standards: IEC 61340 / ANSI 20.20 are designed to prevent damage to electronics. Adhering to these standards is necessary to ensure the safety and quality of products.
5. Cost savings: By investing in proper ESD protection, costs for claims and damages can be significantly reduced. It can also help prevent losses due to damaged equipment or defective products.

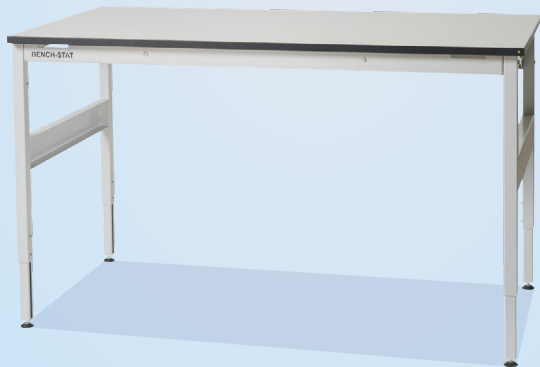
There is a great need in the industry to protect and control components and processes in EPA environments. Therefore, at Sono, together with our customers, we have developed a range of products to meet the daily challenges faced in these production environments.



CLASSIC WORKBENCH

ART-NR.: 44-500-XX00

The classic workbench is a complete solution featuring an ESD-safe surface, suitable for both compact and large-scale industrial environments. Ideal for use in manufacturing, warehousing, assembly areas, and technical workstations. Made in Sweden and finished with an ESD coating for enhanced protection.



CLASSIC WORKBENCH

ART-NR.: 44-500-XX00



Product information

Frame Type:	Light H-Frame
Frame material:	Steel and polyester powder coating
Max Load:	300 kg
Coating:	ESD Paint
Color:	Grey RAL 9006
Lighting:	Up to 8276 lm
Mounting:	Easy assembly
Certified:	Tested and approved according to IEC 61340-5-1

Dimensions excluding the top:

Minimum height	710 mm
Maximum height	1.000 mm

Warranty years: 5-year



Art. no.	Sizes (mm)
44-500-1000	1.000 x 800
44-500-1200	1.200 x 800
44-500-1600	1.600 x 800
44-500-2000	2.000 x 800



Advantage

- High stability and uniform weight distribution, designed to adapt to a variety of work environments.
- Integrated ESD protection ensures the safe handling of sensitive electronic components.



Areas of use

- Industrial environments.
- Warehousing and logistics.
- Assembly and production.
- Workstations for technical service.



ELECTRICAL WORKBENCH

ART-NR.: 44-505-XX00

The electrical workbench is a comprehensive solution featuring an ESD-safe surface, designed to suit both compact and spacious environments where user ergonomics are essential. It is ideally suited for industrial settings, warehouses, assembly lines, and technical workstations.



ELECTRICAL WORKBENCH

ART-NR.: 44-505-XX00



Product information

Frame Type:	Ergomini
Frame material:	Steel and polyester powder coating
Max Load:	250 kg
Coating:	ESD Paint
Color:	Grey RAL 9006
Lighting:	Up to 8276 lm
Mounting:	Easy assembly
Certified:	Tested and approved according to IEC 61340-5-1

Dimensions excluding the top:

Minimum height	710 mm
Maximum height	1.165 mm

Warranty years: 5-year



Art. no.	Sizes (mm)
44-505-1000	1.000 x 800
44-505-1200	1.200 x 800
44-505-1500	1.500 x 800
44-505-1600	1.600 x 800
44-505-1600L	1.600 x 800
44-505-2000	2.000 x 800



Advantage

- Ergonomic design that promotes user comfort.
- High stability and durability.
- ESD protection for safe handling of electronic components.



Areas of use

- Industrial environments.
- Warehousing and logistics.
- Assembly and production.
- Workstations for technical service.

WORKBENCH LIGHTING



LED WORK LAMP for Assembly and Packing Stations

Product information

Main input voltage:	220-240 VAC / 50-60Hz	Lumen/W:	145,2 lm/W
IP classification:	IP20	Dimmable:	Yes
Colour temperature:	4000K	Main material:	Steel, PC, PMMA
CRI:	>80	Lite time lightsource:	L90B10 100.000h
Life time fixture:	100,000h	SDCM:	<3
Driver:	built-in	(Standard Deviation of Color Matching)	
Beam Spread lightsource:	116°	Energy Class (EPREL):	C
		Photobiological safety:	RG 1

A high efficiency work luminaire designed for illuminating assembly, inspection, and packing workstations. Thanks to its overhead mounting capability, the lamp delivers uniform illumination of the work surface, minimizing shadows and improving comfort and precision during tasks.

LIGHTING



Led Lighting table

Art. no.	Details
44-510-1200	Led Lighting table 1200
44-510-1600	Led Lighting table 1600
44-510-2000	Led lighting table 2000



Lighting table

Art. no.	Details
44-510-0001	1200 complete with brackets/rail
44-510-0002	1600 complete with brackets/rail
44-510-0003	2000 complete with brackets/rail
44-510-0002A	1600 without brackets and rail



Lighting table side

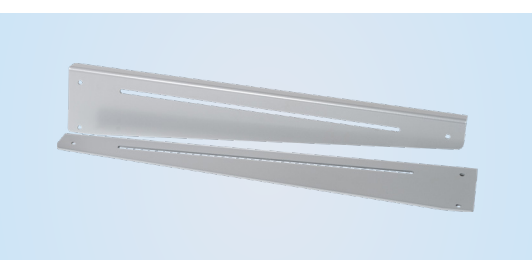
Art. no.	Details
44-510-0004	Lighting side 800mm right
44-510-0020	Lighting side 800mm left



Led Lighting with magnets

Art. no.	Details
44-510-0400	Led Lighting 400mm with 4 magnets

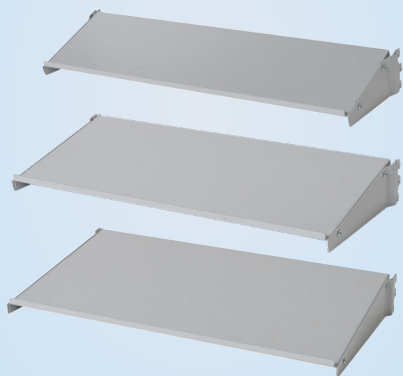
Dimmable with push button and magnets
 Cable grounded L3000 Black
 Aprox. 12W, 1920lm, CRI80



Lighting bracket

Art. no.	Details
44-510-0051	Lighting bracket right+left complete with screws

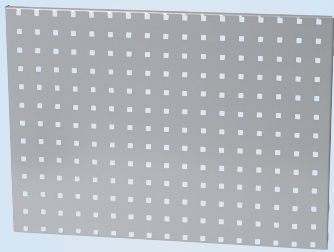
WORKBENCH ACCESSORIES



Shelf including Brackets

Art. no.	Details
44-510-0024	Shelf cc670 D200mm for 1000/1600 table
44-510-0025	Shelf cc900 D200mm for 1200/2000 table
44-510-0005	Shelf cc670 D300mm for 1000/1600 table
44-510-0006	Shelf cc900 D300mm for 1200/2000 table
44-510-0026	Shelf cc670 D400mm for 1000/1600 table
44-510-0027	Shelf cc900 D400mm for 1200/2000 table

ACCESSORIES



Tool board half-size

Art. no.	Details
44-510-0007	Height 480mm for 1000/1600 table
44-510-0008	Height 480mm for 1200/2000 table



ESD table sound absorbers

Art. no.	Sizes in mm
44-301-0031	cc670 D600 for 1000/1600 table
44-301-0032	cc900 D600 for 1200/2000 table



Power outlet

Art. no.	Details
44-510-0009	Power outlet for 1000/1600 table
44-510-0010	Power outlet for 1200/2000 table



Spacer perfo column

Art. no.	Details
44-510-0014	Spacer for 1000/1600 table
44-510-0015	Spacer for 1200/2000 table



Pillar perf

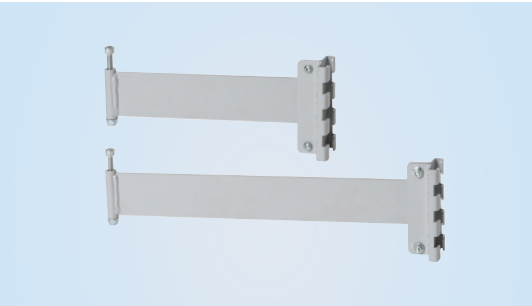
Art. no.	Details
44-510-0012	Standard - 50x25 - 1740mm
44-510-0011	Option - 50x25 - 875mm
44-510-0035	Option - 50x25 - 1500mm



Clamp bracket est for pillar perf

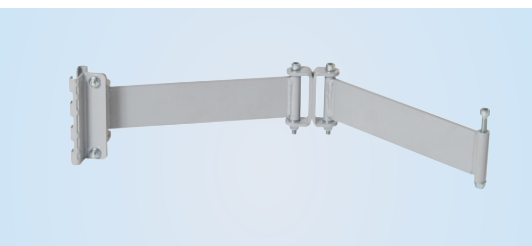
Art. no.	Details
44-510-0018	Clamp bracket est for pillar perf /1

ACCESSORIES



Single computer arm

Art. no.	Size
44-510-0037	250mm
44-510-0038	400mm



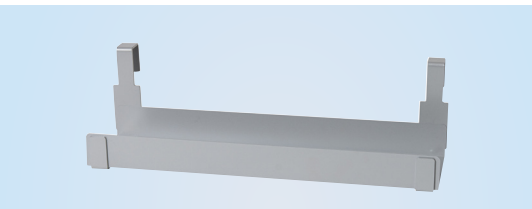
Two part computer arm

Art. no.	Size
44-510-0031	250x250mm

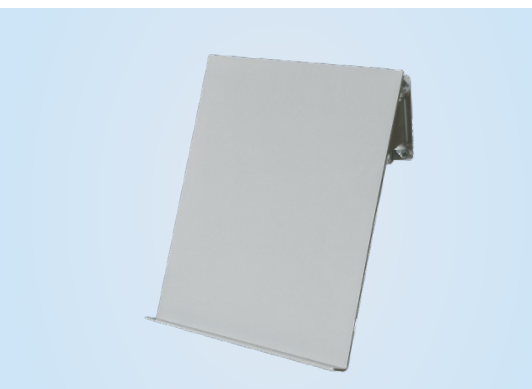


Holders

Art. no.	Details
44-510-0034	Plate for storage



Art. no.	Details
44-510-0039	CPU holder ESD 210x700x70mm for classic table

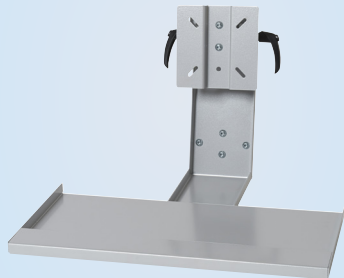


Art. no.	Details
44-510-0042	Document holder



Art. no.	Details
44-510-0013	Mobile phone holder

ACCESSORIES



Holders

Art. no.	Details
44-510-0032	Monitor holder (VESA)/ Keyboard holder for two-part arm



Art. no.	Details
44-510-0043	VESA computer holder



Art. no.	Details
44-510-0033	Thin Client Holder for monitor holder

Undershelf table



Art. no.	Details
44-510-0044	1200 manual Classic Workbench
44-510-0045	1600 manual Classic Workbench
44-510-0046	2000 manual Classic Workbench



Cable plate for cables

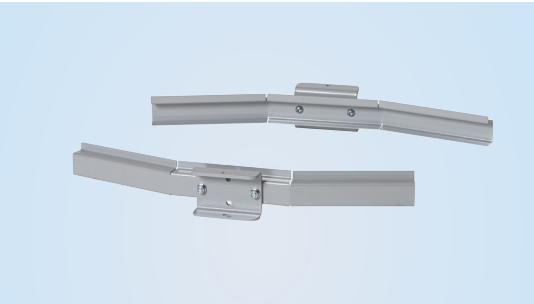
Art. no.	Details
44-510-0047	Cable plate for cables for 1000/1600 table
44-510-0048	Cable plate for cables for 1200/2000 table



Cover plate with brush strip

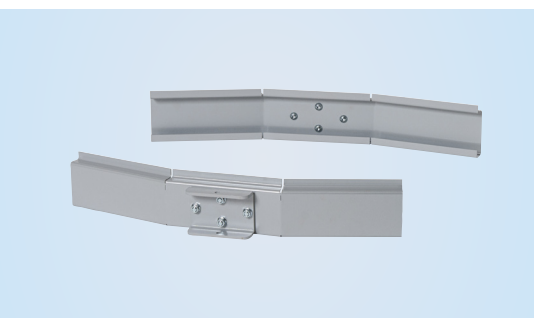
Art. no.	Details
44-510-0049	Cover plate with brush strip for 1000/1600 table
44-510-0050	Cover plate with brush strip for 1200/2000 table

ACCESSORIES

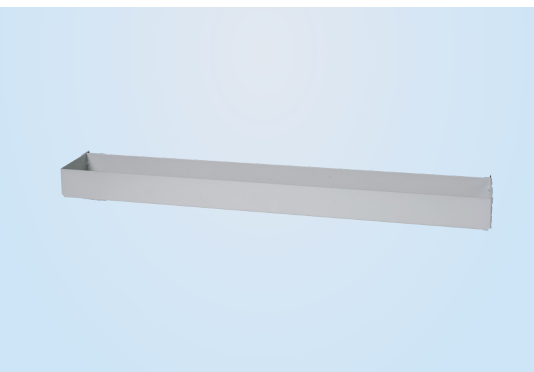


Bin Rails

Art. no.	Details
44-510-0040	Bin rail for Swivel arm



Art. no.	Details
44-510-0041	Double Bin rail for Swivel arm



Bin rail for picking bins

Art. no.	Details
44-510-0022	For 1000/1600 table
44-510-0023	For 1200 and 2000 table
44-510-0052	Including a box for 1000/1600 table
44-510-0053	Including a box for 1200 and 2000 table



C-Profile

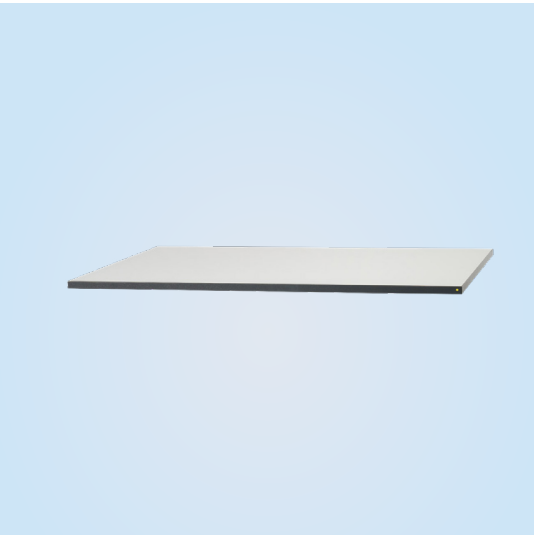
Art. no.	Details
40-510-0028	925 for 1200 table
40-510-0029	1365 for 1600 table
40-510-0030	1825 for 2000 table



Hook

Art. no.	Details
40-020-2020	Set 20
40-020-2025	Set 30
40-020-2030	Set 50

ACCESSORIES



ESD Table top

Art. no.	Sizes in mm
44-202-6002	2000 X 800 X 24
44-202-6042	1600 X 800 X 24
44-202-6043	1200 X 800 X 24
44-202-6044	1000 X 800 X 24

Option

Art. no.	Details
44-201-6014	ESD Table top with a ESD Mat 2000 X 800 X 24

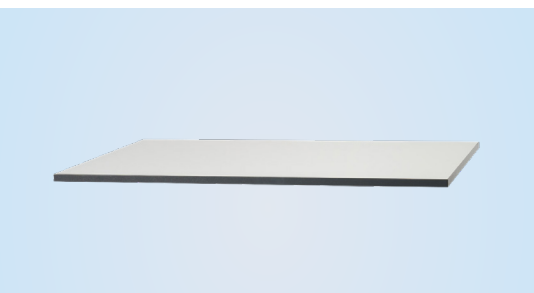
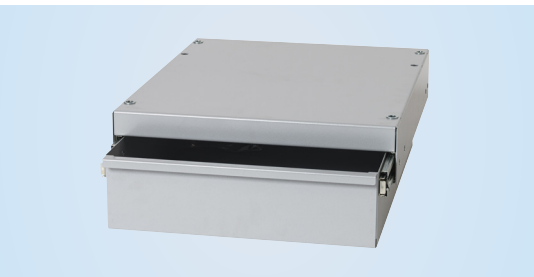


Table top non ESD

Art. no.	Sizes in mm
44-222-6043	1200 X 800 X 24
44-222-6042	1600 X 800 X 24
44-222-6002	2000 X 800 X 24



Drawer unit

Art. no.	Details
44-510-0019	1 drawer
44-510-0017	2 drawers



Grounding

Art. no.	Details
30-552-6047	Grounding contact flat pin
30-552-6005	Grounding cord eu/10mm female 1,5m



Grounding box

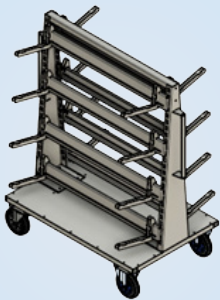
Art. no.	Details
30-551-3020	Grounding box 3x10mm male studs
30-551-3040	Grounding box 3xbanana

EXTRAS



Hook

Art. no.	Details
44-510-0054	Universal hook of 6 pieces



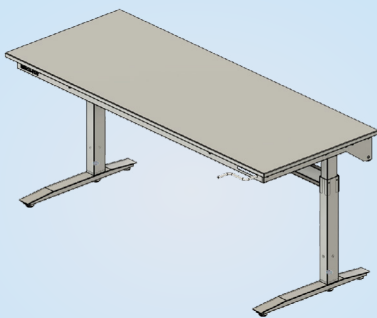
Special

Art. no.	Details
44-509-1610	ESD modular trolley 1200x1600x800 mm
44-509-1611	ESD arm modular trolley



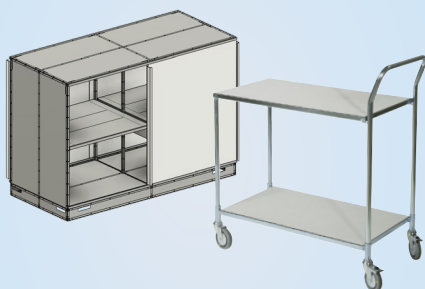
Electrical Pillar Table

Art. no.	Details
40-507-0605	ESD Pillar table 600x500 640-1040mm
40-507-0605B	ESD Pillar table battery 600x500 640-1040mm



Manual Handle Table

Art. no.	Details
44-506-1000	Workbench Handle ESD 1000mm
44-506-1200	Workbench Handle ESD 1200mm
44-506-1600	Workbench Handle ESD 1600mm
44-506-2000	Workbench Handle ESD 2000mm



Cabinet & Trolley

Art. no.	Details
40-020-0037	ESD cabinet with sliding doors on both sides 1600x1100x792 (wxhxd)
40-200-7000	Trolley with conductive sh 800x430x980mm
40-200-7001	Trolley with ESD mat grey sh 800x430x980mm

EXTRAS

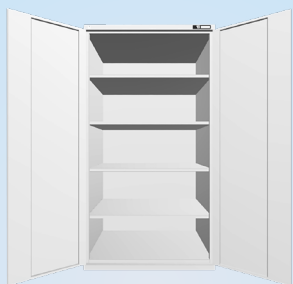
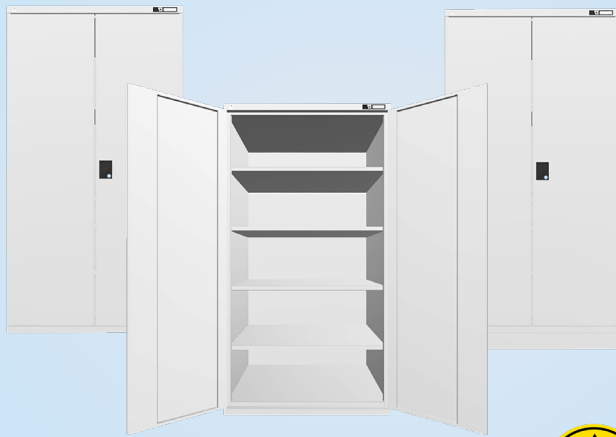


ESD CABINET

ART-NR.: 40-020-30XX

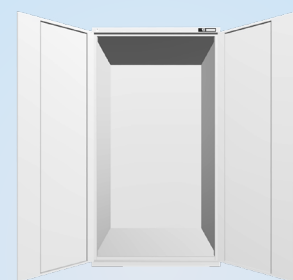
Product information

- Coating:** ESD Paint
Color: Grey RAL 9006
 Shelf provided with ESD paint
- Loading capacity:** 100kg
 70kg drawers
- Mounting:** Easy assembly
 Height adjustable shelves



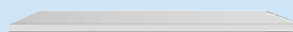
ESD Cabinet

Art. no.	Details
40-020-3005	ESD Cabinet with 4 shelves 1950x1044x655mm
40-020-3010	ESD Cabinet with 4 shelves 1950x950x405mm



ESD Cabinet

Art. no.	Details
40-020-3015	ESD Cabinet base 1950x1044x655



Art. no.	Details
40-020-3020	ESD Shelves 1010x570 mm



Art. no.	Details
40-020-3060	ESD Base for forklift

EXTRAS



ESD Drawers

Art. no.	Details
40-020-3025	ESD Drawer 75mm
40-020-3030	ESD Drawer 100mm
40-020-3035	ESD Drawer 125mm
40-020-3040	ESD Drawer 150mm
40-020-3045	ESD Drawer 200mm
40-020-3050	ESD Drawer 250mm
40-020-3055	ESD Drawer 300mm



ESD DRAWER CABINET

ART-NR.: 40-400-61XX

Product information

Coating:	ESD Paint
Color:	Grey RAL 9006
Loading capacity:	70kg drawers
Extension:	88%
Includes:	1 pair of handles 2 castors 100mm 2 castors with brake 100mm

Size: 590x442x600mm (HxWxD) excl. wheels



ESD Drawer Cabinet

Art. no.	Details
44-400-6147	ESD Drawer Cabinet 590x442x600mm Drawers: 3x100mm, 1x200mm



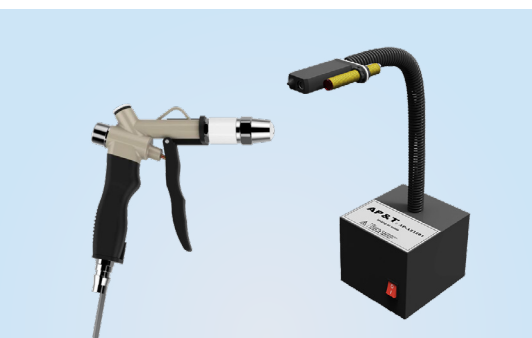
ESD Drawer Cabinet

Art. no.	Details
44-400-6148	ESD Drawer Cabinet 590x442x600mm Drawers: 1x100mm, 1x150mm, 1x250mm

IONISATION

For enhanced ESD protection at the workstation, our range also includes ionizers compatible with ESD workbenches. These devices effectively neutralize electrostatic charges in the surrounding air, helping to prevent unwanted discharges and ensuring optimal protection of sensitive components.

Whether you work in general electronics, cleanrooms, or high-precision assembly, our ionization solutions deliver performance, reliability, and great value.



Ionising Blowers Overhead

Art. no.	Details
60-200-0103	Two fan overhead ionizing air blower LED display
60-200-0104	Three fan overhead ionizing air blower LED display
60-200-0105	Four fan overhead ionizing air blower LED display

Art. no.	Details
60-200-0093	Two fan overhead ionizing air blower
60-200-0094	Three fan overhead ionizing air blower
60-200-0095	Four fan overhead ionizing air blower

Desktop Ionizing Air Blower

Art. no.	Details
60-200-0092	Self-cleaning Desktop Ionizing Air Blower
60-200-0096	Mini Ionizing Air Blower
60-200-0111	Intelligent Control Ionizing Air Blower
60-200-0106	Network Ionizing Air Blower
60-200-0102	Network LED display Ionizing Air Blower

Ionizing air gun

Art. no.	Details
60-200-0115	Ionizing Air Gun AP-AC2456
60-200-0115A	Ionizing Air Gun AP-AZ1211
60-200-0130A	Power Supply
60-200-0118	Ionizing Air Snake AZ3201

Ionizing Air Nozzle

Art. no.	Details
60-200-0116	Ionizing Air Nozzle DC3203
60-200-0117	Ionizing Air Nozzle AC2454-A
60-200-0130	Power Supply



STATURE
technical furniture

Our range of ESD solutions is designed to optimize production processes and ensure smooth workflows.

Waterstraat 7w
6658 AA Beneden-Leeuwen
+31 6 23 66 92 04
info@stature.nl

www.stature.nl